

Artemis Views™

Artemis Project Management

Artemis Project Management is a total project and resource collaboration solution designed to improve the productivity of your organization by getting projects done more quickly and intelligently.

Our web-based solution offers a customizable portal for personalized access to important project data and leverages the power and technology of the Views suite for accurate planning, budgeting, tracking, and communication of project and resource data at every organization level. Based on input from customers, we've developed this feature-rich solution for all of your project and resource driven initiatives.

Artemis Project Management: A Role-Based Solution for Optimal Project and Resource Management

Artemis Project Management meets the needs of everyone involved in one or more projects across the enterprise, including:

- program managers
- project managers
- resource managers
- individual resources
- executive management



Using advanced multi-project architectures, industry standard databases, and intuitive Windows and browser-based management and allocation tools, Artemis Project Management handles the most complex projects and resource challenges.

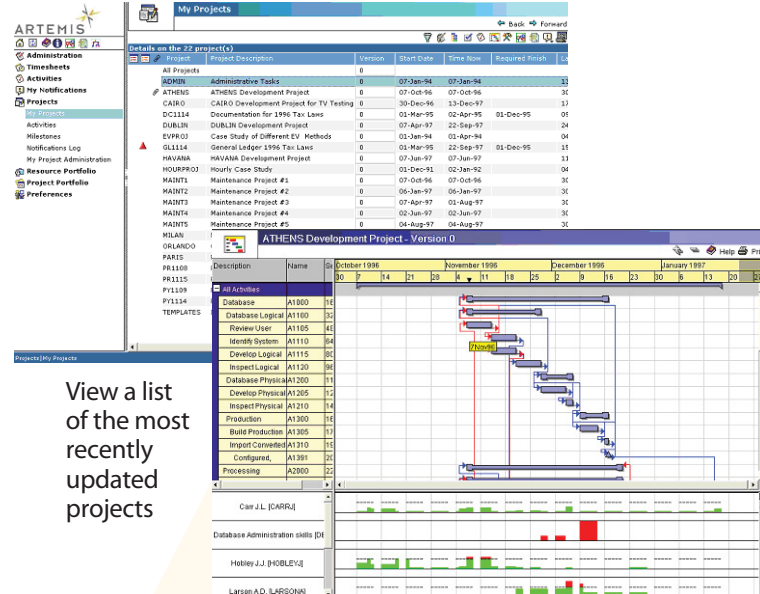
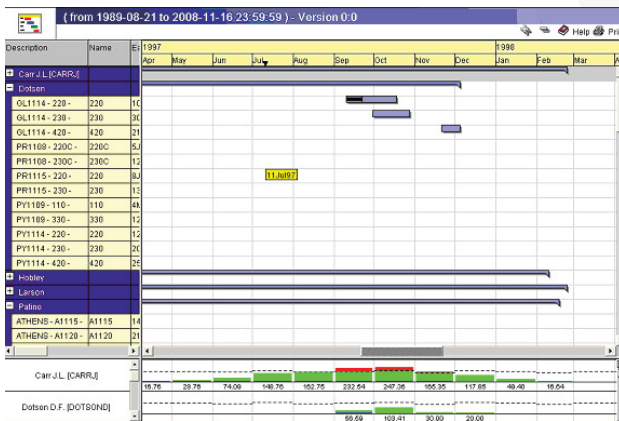
Artemis Project Management Features

The Artemis Project Management solution offers all the features you have come to expect from our industry-leading Views suite.

- Web-based portal: personalized, Web-based homepage that displays role-based information and provides easy access to important data
- Planning and scheduling: plan, control, and monitor the progress of all projects
- Timesheet tracking and approval: implement automated weekly timesheet and task progressing with proven enterprise scalability
- Cost control: organize project cost planning, schedule integration, and earned value management (EVM) process
- Customized, role-based instant reminders and notifications: communicate business critical events in real-time
- Risk management: detect and mitigate project risks to any multi-project code structure element, project, or activity
- Issue resolution: identify issues and develop resolution strategies to any multi-project code structure element, project, or activity
- Project portfolio management: analysis and review of cost and schedule information for project portfolios
- Resource management: streamline the time, cost, and risk of identifying, securing, and keeping the resources needed
- Executive reporting: access information from multiple business perspectives, including Gantt charts, for various user roles

APM Highlights

- Multi-project visibility and interface metaphors allow you to easily handle portfolio views and analytical information
- Barchart viewer functionality includes traffic light indicators that relate to project/multi-project information
- Ability to attach unstructured data to activities and projects strengthens enterprise-wide collaboration
- Simple navigational scheme with comprehensive, role-based drop-down menus
- Advanced edit/add/delete functionality allows remote users to manage and control changes to their plans and schedules



View a list of the most recently updated projects

View a barchart of selected projects

Contact us today to learn how APM can optimize your processes and maximize your business performance.

Specifications:

- Client Machines:
Windows 2000, XP, Vista, Linux
- Client Browsers:
Microsoft Internet Explorer, Firefox
- Databases:
Oracle version 9i, 10g
Microsoft SQL Server 2000, 2005
- Web Application Server: IIS with ServletExec ,
Apache Tomcat, Websphere, WebLogic
- Web Server Components:
Native Servlet engine or third-party Servlet engine (Servlet Exec)
Native JDBC driver for Oracle or third-party JDBC driver for SQL Server

Artemis Project Management resource management features include displays of all resources associated with all elements of the OBS for which a resource manager is responsible.

A key component of the Artemis Business Management Architecture, APM is your answer for maximum control over a variety of business-critical

APM Application Areas

Core elements of APM's IS/IT-specific functionalities include accessibility, usability, a centralized and open database, and executive decision-making support via interactive dashboards. APM also helps you identify your new product development strategy, track all related activities, and support a timely product launch. APM also supports capital program management with early-warning indicators and comprehensive reports that provide performance visibility.

WWW.AISC.COM

© 2008 Artemis International Solutions Corporation. All rights reserved. Artemis 9000/EX, Views, ProjectView, TrackView, CostView, ActiveAlerts, Artemis 7 and PerformanceView are trademarks or registered trademarks of Artemis International Solutions Corporation. All other product or company names mentioned are trademarks of their respective owners. Artemis may vary the specification and availability of these products and services without notice.